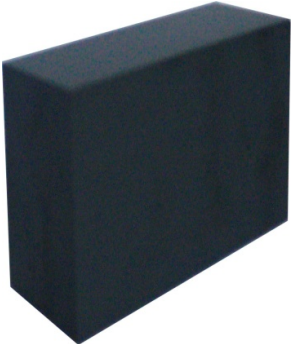




Appearance & Shape: To be free from any defect such as flow, burrs, unevenness etc; as per IEC standards

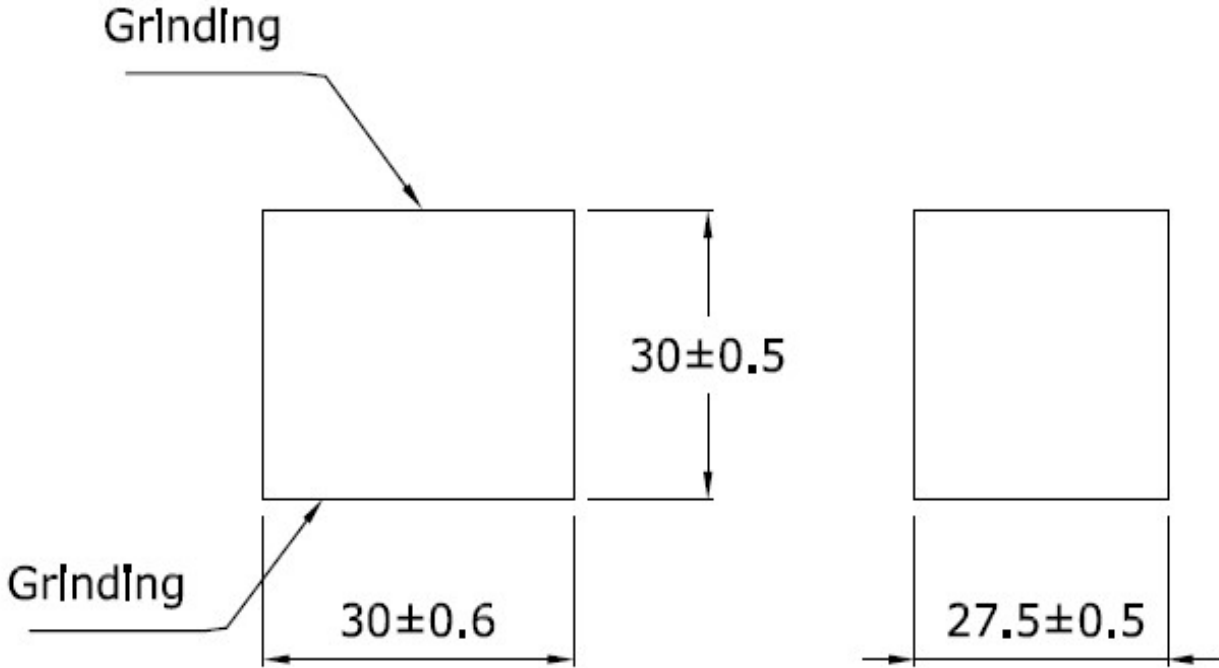
Effective parameters irrespective of material grade (per piece)

| | | |
|------------------------------|-----|-------|
| Approx. Weight (without gap) | 120 | g/pc. |
|------------------------------|-----|-------|



I3030 (OL)

| Material Grade | Initial Permeability (μ_{iac}) | Ordering code |
|----------------|--------------------------------------|----------------|
| CF139 | 2100 \pm 20% | CF139 I3030 OL |
| CF297 | 2300 \pm 20% | CF297 I3030 OL |



For general terms and conditions please visit

http://www.cosmoferrites.com/Downloads/Downloads/bcb70e7c-ae33-40ec-a881-0d5120db57b6_GTC.pdf

Regd. Office & Works: Jabli, Distt. Solan, Himachal Pradesh – 173 209 (India)

E-mail: sales@cosmoferrites.com