



**Appearance & Shape:** To be free from any defect such as flow, burrs, unevenness etc; as per IEC standards

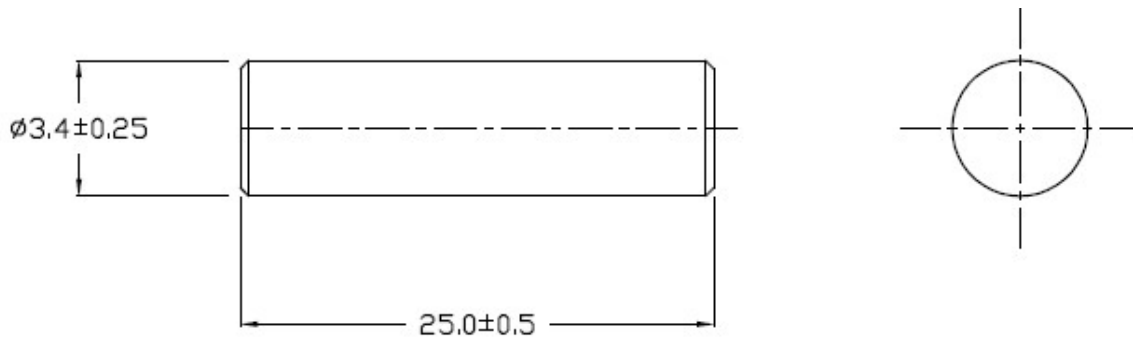
**Effective parameters irrespective of material grade (per piece)**

Approx. Weight (without gap)	1.05	g/pc.
------------------------------	------	-------



**R0325 (OL)**

Material Grade	Initial Permeability ( $\mu_{iac}$ )	Ordering code
CF139	2100 $\pm$ 20%	CF139 R0325 OL
CF297	2300 $\pm$ 20%	CF297 R0325 OL



For general terms and conditions please visit

[http://www.cosmoferrites.com/Downloads/Downloads/bcb70e7c-ae33-40ec-a881-0d5120db57b6\\_GTC.pdf](http://www.cosmoferrites.com/Downloads/Downloads/bcb70e7c-ae33-40ec-a881-0d5120db57b6_GTC.pdf)

**Regd. Office & Works: Jabli, Distt. Solan, Himachal Pradesh – 173 209 (India)**

**E-mail: sales@cosmoferrites.com**